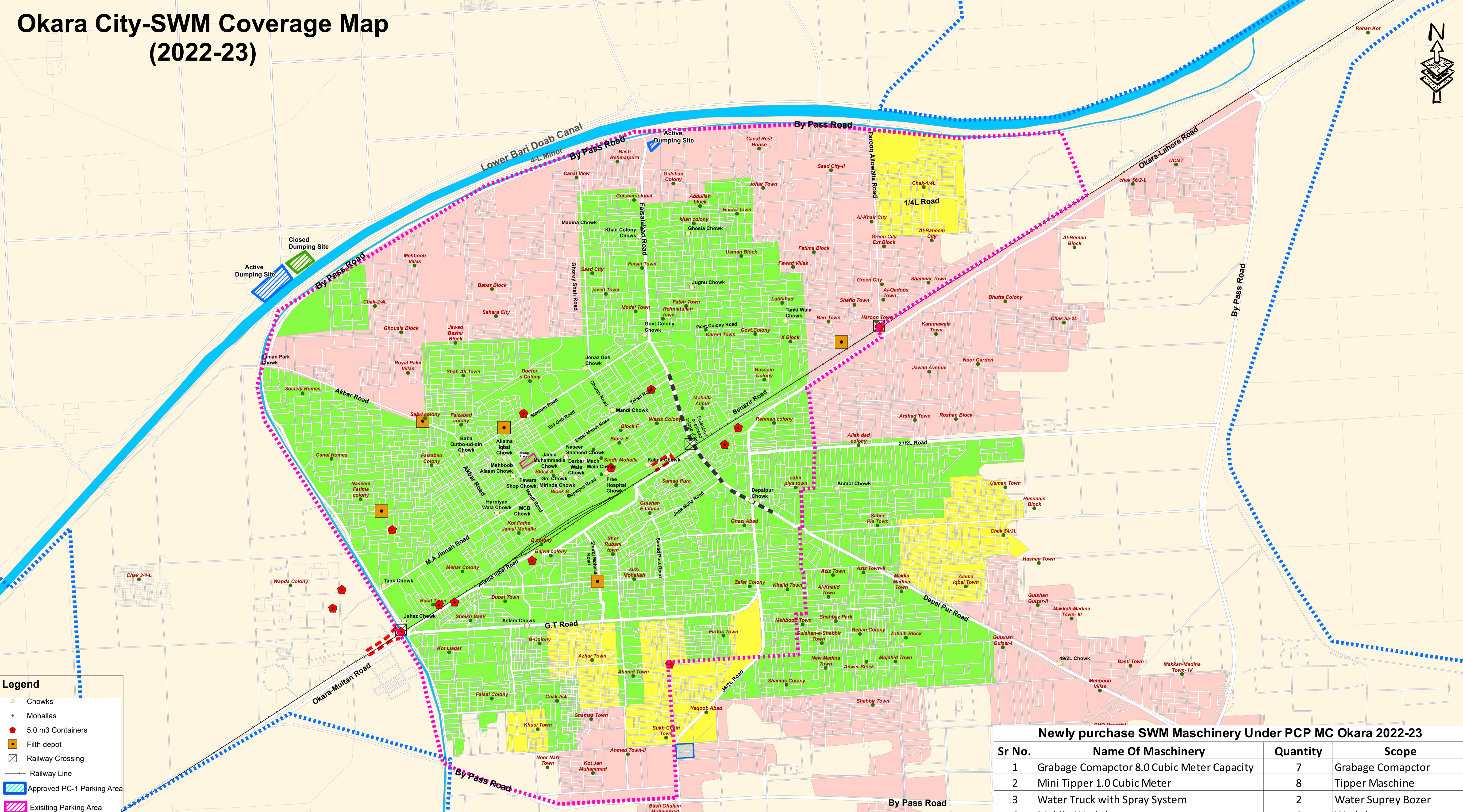


Okara City-SWM Coverage Map (2022-23)



- Legend**
- Chowks
 - Mohallas
 - ♦ 5.0 m³ Containers
 - Filth depot
 - Railway Crossing
 - Railway Line
 - Approved PC-1 Parking Area
 - Existing Parking Area
 - Active Dumping Site
 - Closed Dumping Site
 - Canal
 - Totally Served Area
 - Partially Served Area
 - Unserved Area
 - Road Boundary
 - Parcel Boundary
 - MC Boundary PLGA 2013
 - MC Boundary PLGA 2019

SWM Coverage Area (Acres)		
Coverage Type	Area(2021-22)	Area(2022-23)
Totally Served Area	2966	2966
Partially Served Area	496	496
Unserved Area	2735	2735

Prepared by: GIS Officer M.C. Okara	Signed by: Municipal Officer (I & S) M.C. Okara	Signed by: Chief Officer M.C. Okara
---	---	---

Newly purchase SWM Maschinery Under PCP MC Okara 2022-23			
Sr No.	Name Of Maschinery	Quantity	Scope
1	Grabage Comapctor 8.0 Cubic Meter Capacity	7	Grabage Comapctor
2	Mini Tipper 1.0 Cubic Meter	8	Tipper Maschine
3	Water Truck with Spray System	2	Water Suprey Bozer
4	Mobile Workshop	1	Workshop
5	Dump Truck 10 Cubic Meter	2	Dump Truck
6	Wheel Excavator	2	Excavator
7	Hydraulic Aerial Platform	1	Hydraulic Maschine
8	Front Blade Tractor	2	Front Blade
9	Front End Loader	2	Loader
10	Garbage Container 0.8 Cubic	308	Garbage Containe
11	Hand Cart Conventional	405	Hand Cart
12	Hand Cart Tipping Trolley	5	Garbage Trolley
13	Tractor Towed Mechanical Sweeper	3	Sweeper Tractor